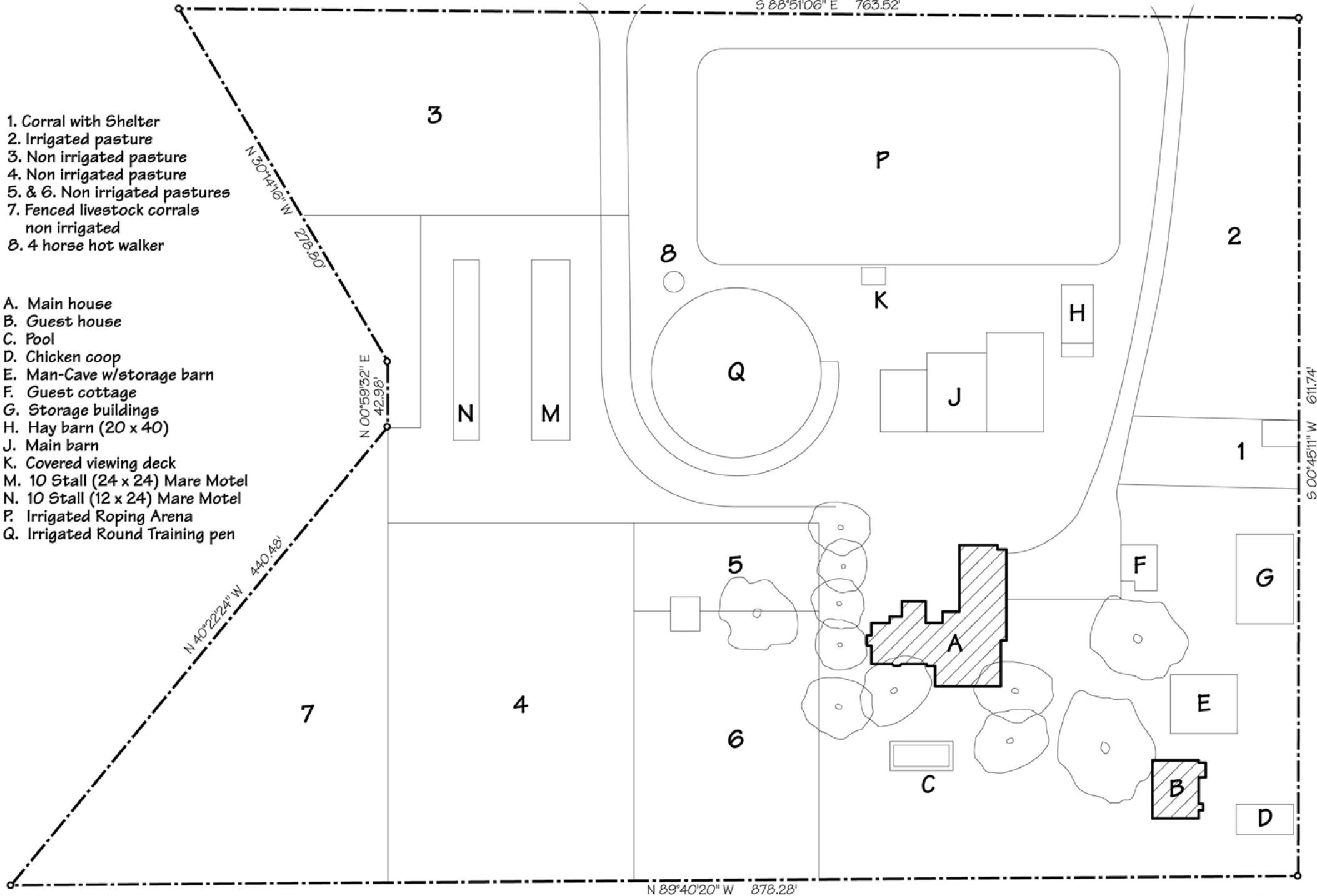


ROBLAR AVENUE

S 88°51'06" E 763.52'

- 1. Corral with Shelter
- 2. Irrigated pasture
- 3. Non irrigated pasture
- 4. Non irrigated pasture
- 5. & 6. Non irrigated pastures
- 7. Fenced livestock corrals non irrigated
- 8. 4 horse hot walker

- A. Main house
- B. Guest house
- C. Pool
- D. Chicken coop
- E. Man-Cave w/storage barn
- F. Guest cottage
- G. Storage buildings
- H. Hay barn (20 x 40)
- J. Main barn
- K. Covered viewing deck
- M. 10 Stall (24 x 24) Mare Motel
- N. 10 Stall (12 x 24) Mare Motel
- P. Irrigated Roping Arena
- Q. Irrigated Round Training pen



Scale: 100ft 200ft 300ft

3248 ROBLAR AVENUE - SITE PLAN

APN: 141-030-041
ACREAGE = ±9.66



This information is compiled from sources deemed reliable but accuracy is not guaranteed.
David Heidelberger • Design & Graphics • 805.965.4857 • Santa Barbara