

1988 EAST VALLEY ROAD
 Residence ±5589 Square Feet
 Garage ±649 Square Feet

Scale: 5 ft. 10 ft. 15 ft. 20 ft. 25 ft.
 This information is compiled from sources deemed reliable but accuracy is not guaranteed.
 David Heidelberger • Design & Graphics • 805-965-4857 • Santa Barbara

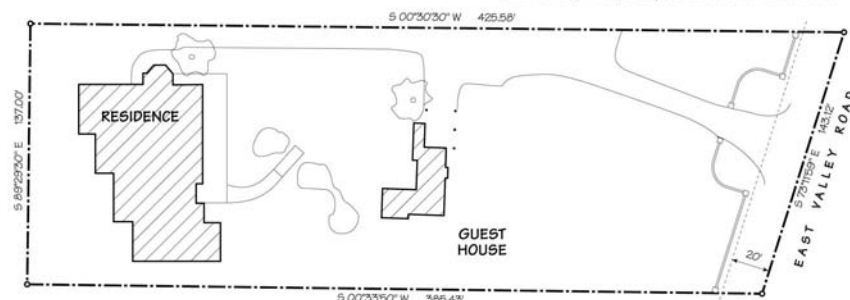


1988 EAST VALLEY ROAD
 Accessory Cottage ±890 Square Feet

Scale: 5 ft. 10 ft. 15 ft. 20 ft. 25 ft.
 This information is compiled from sources deemed reliable but accuracy is not guaranteed.
 David Heidelberger • Design & Graphics • 805-965-4857 • Santa Barbara

1988 EAST VALLEY ROAD
 Site Plan
 APN: 007-130-023
 Acreage = ±1.27

Scale: 25ft. 50ft. 75ft. 100ft.
 This information is compiled from sources deemed reliable but accuracy is not guaranteed.
 David Heidelberger • Design & Graphics • 805-965-4857 • Santa Barbara



LA CASA DE DOS PALMAS
 1988 EAST VALLEY ROAD

OFFERED AT \$5,850,000

STYLE:	SPANISH	AGE:	BUILT IN 2000
APN:	007-130-023	BEDROOMS:	THREE MAIN HOUSE
ARCHITECT :	KETZEL & GOODMAN	BATHROOMS:	THREE PLUS TWO HALF BATHS
ACCESSORY COTTAGE			THREE ROOMS KITCHENETTE BATHROOM FIREPLACE

Picture the classic and coveted gated Spanish style estate with red tiled roofs, bougainvillea-covered arches, flagstone walkways, wrought-iron detail, artfully crafted and lovingly maintained. Colorful and lush gardens frame the two structures on 1.3 private acres with ocean and mountain views.

Custom designed and built in 2000, this Ketzels and Goodman estate is an outstanding blend of traditional design and modern innovations for today's lifestyle. The main house is rich with character and elegant features including three spacious bedroom suites, three full and two half baths, four fireplaces, beautiful walnut and old style tile floors, high beam ceilings, and a fantastic gourmet kitchen with octagonal breakfast room. With a fabulous layout, the gourmet kitchen opens to the great room, and the great room to the south facing, heated and covered veranda. Additionally, there is a large and cozy library, and the lower level features a media room, wet bar, wine storage, and exercise area. This home is made for entertaining!

Follow the flagstone walkways through the gardens to the accessory cottage which features a living room with fireplace, kitchenette, two bedrooms, laundry and a bath. The cottage also features covered parking, two patios and a sport court.

